

About Signia

Signia combines industry-leading audiology and technology to deliver iconic innovations in hearing to enhance human performance. We put hearing aid wearers first, with products that fit their wants, needs and style. The wearer is at the center of our universe and their needs are woven into our DNA. For us, this is not about correcting a loss, it's about gaining an edge. Not just performing, but performing at their best.

Find out more on signia-hearing.com

Or ask your hearing care professional for more information on Signia hearing aids, useful accessories and the Signia app.





The information in this document contains general descriptions of the technical options available, which do not always have to be present in individual cases and are subject to change without prior notice.

Be
Brilliant™

Legal Manufacturer
Sivantos, Inc.
10 Constitution Avenue
Piscataway, NJ 08854

SH202123 SIV-10388-21
© 02.2021 WSAUD A/S

Find us on

-  signia-pro.com
-  signia-hearing.com
-  facebook.com/signiahearing
-  youtube.com/signiahearing

EarWear 3.0

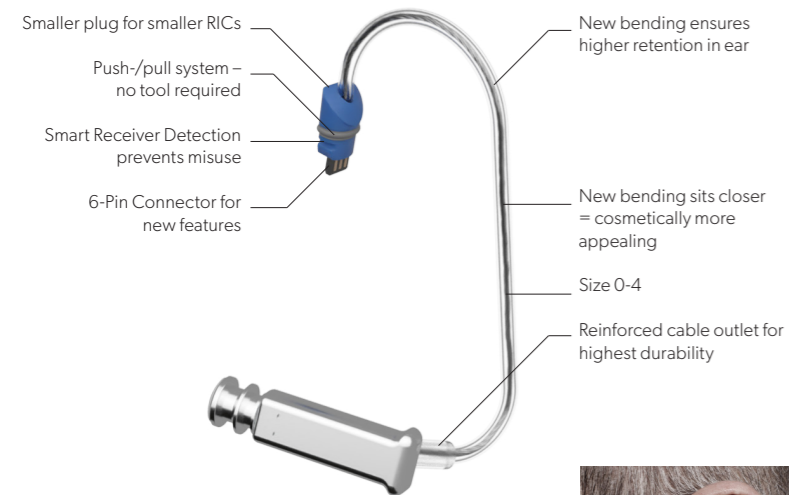



signia

EarWear 3.0

Why new EarWear

Our new EarWear 3.0 offers a higher physical fit rate, improved cosmetics and better retention



miniReceiver 3.0 Cable Bending 10 / 10 fit correctly – out of the box

Higher physical fit rate

Softer eartips and smaller receivers allow deeper insertion with high comfort, even into small ear canals.

Cosmetically appealing

Improved cable/tube bending and in-ear position ensures a closer fit on the ear, making it less visible. Every receiver power is available in the lengths 0-4.

Better retention

A special bending of the cable/tube and its outlet locks the acoustic coupling reliably into the ear canal, with no lateral migration and no need for an anchor.

New eartips and new sleeves

Compatible with miniReceiver 3.0 and ThinTube 3.0 and easier for your patients to exchange (compared to click domes).

The Sleeve portfolio has been extended with a Power option - ensuring optimal acoustical coupling also for severe hearing losses. Compatible with ThinTube 3.0 and miniReceiver 3.0.

Smaller hearing aids

The introduction of a substantially smaller plug or connection point allows for smaller RIC designs overall.

Improved usability

The improved interface makes the new Eartips & Sleeves easier for consumers to exchange (compared to click-domes).

EarWear 3.0

New eartips and sleeves

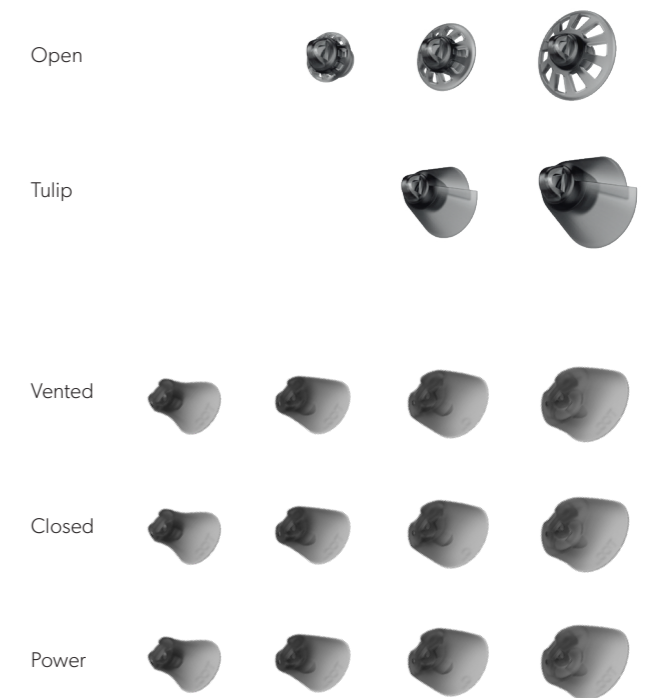
This versatile new range is suitable for the vast majority of ear anatomies and hearing needs

Soft eartip noses allow for deep insertion with high comfort - also into small ear canals

The new Power Sleeve 3.0 expands the acoustically highly reliable sleeve to offer a fully closed option.

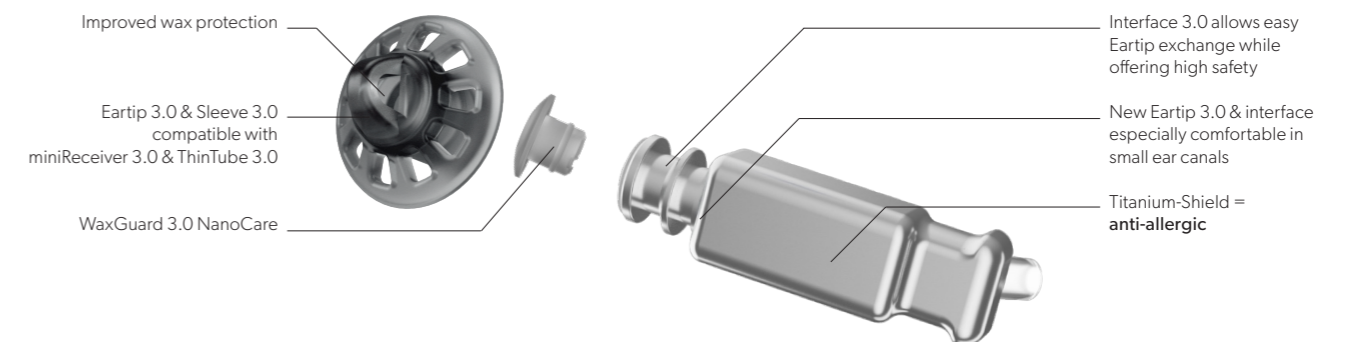
Secure, proven design makes Eartips 3.0 and Sleeves 3.0 much easier for consumers to exchange.

All Earwear 3.0 items can be used together.



Acoustical and physical fitting performance of miniReceiver 3.0 portfolio

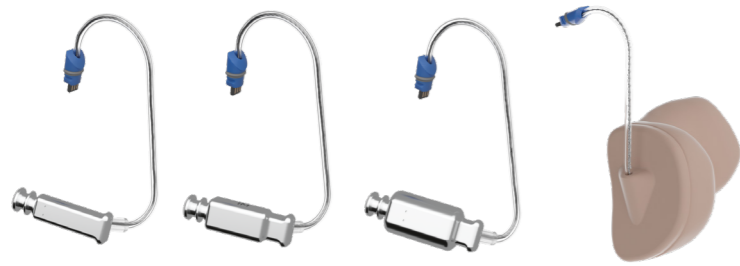
	S 2ccm coupler	M 2ccm coupler	P 2ccm coupler	HP 2ccm coupler
Physical fit rate	↗ +10%	↗ +10%	↗ +100%	→
Acoustical performance 3.0	↗	↗	↘ -5dB FOG	↗
OSPL 90 (Peak)	110 dBSPL	119 dBSPL	122 dBSPL	130 dBSPL
138 dBSPL	46 dB	60 dB	65 dB	75 dB



EarWear 3.0

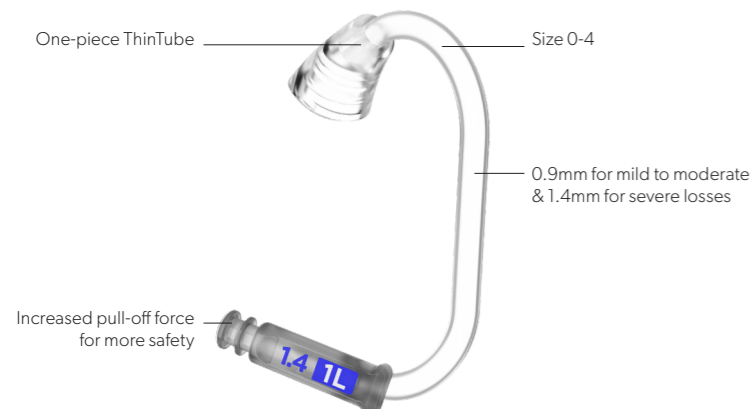
New receivers and thin tubes

The new miniReceiver 3.0 and ThinTube 3.0 use the same eartips and sleeves for maximum simplicity and the same cable/tube geometry for best cosmetics



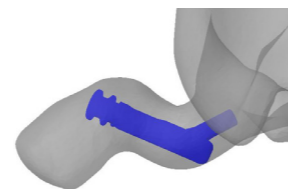
Both ThinTube 3.0 options offer proven better retention, comfort, usability and physical fit rate

The new 1.4mm-width PowerTube also delivers a cosmetically appealing solution with acoustical advantages for more severe degrees of hearing loss.



Cosmetics

New tube/cable bending and in-ear position improves cosmetics of tube/cable on the ear. 25% size reduction of plug system allows for smaller hearing aids.



Retention

Improved bending of tube/cable + outlet locks the acoustical coupling reliably into the ear canal, prevents lateral migration and makes concha-locks redundant.



EarWear 3.0

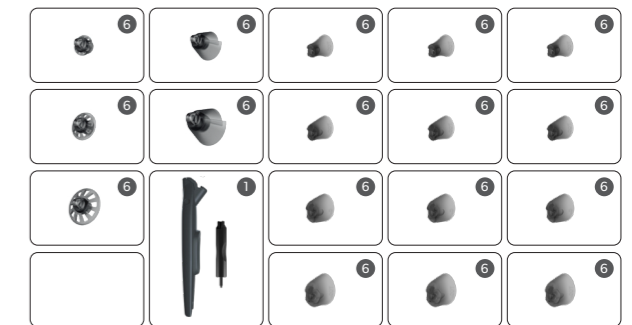
Tools and starter kits

Starter kits are available for each solution: Eartips 3.0, ThinTube 3.0 and miniReceiver 3.0

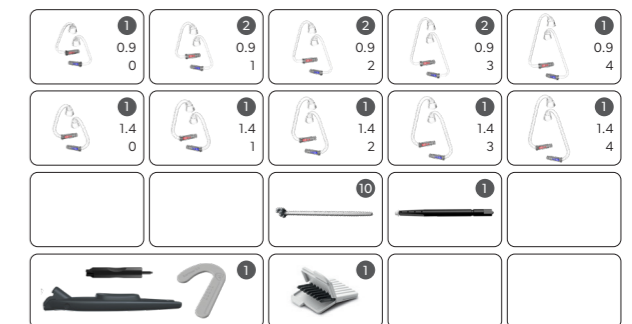
Each kit includes specific items required for that type of EarWear 3.0. These include:

- Measurement gauge to ensure a perfect match for miniReceivers and ThinTubes
- Matchbook containing 8 Wax Guard 3.0 NanoCare
- 10-pack of new one-size-fits-all Concha Locks 3.0
- Optional tool for exchanging eartips
- Tool to press out the receiver from a custom earmold
- EarWear 3.0 instruction manuals, covering everything from eartips and sleeves to attaching or removing ThinTubes or miniReceivers to exchanging earmolds or WaxGuards

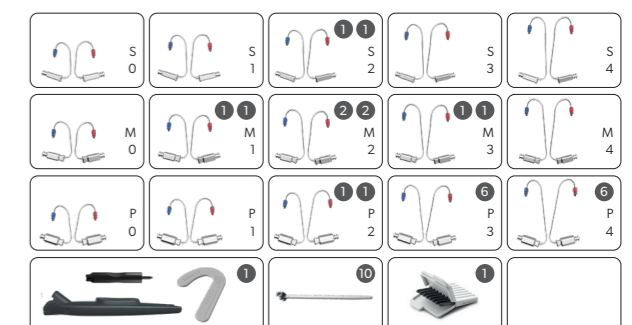
Starter kits Eartips 3.0 contents



Starter kits ThinTube 3.0 contents



Starter kits miniReceiver 3.0 contents



EarWear 3.0

Table compatibility EarWear to devices

Different types of EarWear 3.0 are compatible with different products

Here is an overview of the current compatibility of each solution with our range of hearing aids

	ThinTube 3.0	miniReceiver 3.0	Eartips 3.0 & Sleeves 3.0	Earmold 3.0	ThinTube	Life-Tips	Life-Earmold	miniReceiver 2.0	Click Domes & Click Sleeves	Click Mold
Pure AX series	-	●	●	●	-	-	-	-	-	-
Motion X series ¹	●	-	●	●	-	-	-	-	-	-
Pure X series	-	-	-	-	-	-	-	●	●	●
Styletto X series	-	-	-	-	-	-	-	●	●	●
Silk X series	-	-	-	-	-	-	-	-	●	-
Pure Nx series	-	-	-	-	-	-	-	●	●	●
Styletto Nx series	-	-	-	-	-	-	-	-	●	●
Motion Nx series	-	-	-	-	●	●	●	-	-	-
Silk Nx series	-	-	-	-	-	-	-	-	●	-

¹Motion SPX is not compatible with ThinTube

Brand	Itemnumber	Pieces	Name
Connexx	10993605	1	KIT EARTIPS & SLEEVES 3.0
Connexx	10996321	1	KIT MINIRECEIVER 3.0
Connexx	10992763	1	KIT Thin Tube 3.0

Brand	Itemnumber	Pieces	Name
Signia	10992863	6	SLEEVE 3.0 VENTED XS TBLK
	10992864	6	SLEEVE 3.0 VENTED S TBLK
	10992865	6	SLEEVE 3.0 VENTED M TBLK
	10992866	6	SLEEVE 3.0 VENTED L TBLK
	10992867	6	SLEEVE 3.0 CLOSED XS TBLK
	10992868	6	SLEEVE 3.0 CLOSED S TBLK
	10992869	6	SLEEVE 3.0 CLOSED M TBLK
	10992870	6	SLEEVE 3.0 CLOSED L TBLK
	10997192	6	SLEEVE 3.0 POWER XS CXX
	10997193	6	SLEEVE 3.0 POWER S CXX
	10997194	6	SLEEVE 3.0 POWER M CXX
	10997195	6	SLEEVE 3.0 POWER L CXX
Signia	10993678	6	EARTIP 3.0 5MM OPEN CXX 6 PCE
	10993680	6	EARTIP 3.0 7MM OPEN CXX 6 PCE
	10993681	6	EARTIP 3.0 10MM OPEN CXX 6 PCE
	10993682	6	EARTIP 3.0 8MM TULIP CXX 6 PCE
	10993683	6	EARTIP 3.0 12MM TULIP CXX 6 PCE
	Connexx	10992548	1
10992549		1	MINIRECEIVER 3.0 OL S
10992550		1	MINIRECEIVER 3.0 IR S
10992552		1	MINIRECEIVER 3.0 1L S
10992553		1	MINIRECEIVER 3.0 2R S
10992554		1	MINIRECEIVER 3.0 2L S
10992555		1	MINIRECEIVER 3.0 3R S
10992556		1	MINIRECEIVER 3.0 3L S
10992557		1	MINIRECEIVER 3.0 4R S
10992558		1	MINIRECEIVER 3.0 4L S
10992559		1	MINIRECEIVER 3.0 OR M
10992560		1	MINIRECEIVER 3.0 OL M
10992561		1	MINIRECEIVER 3.0 IR M
10992562		1	MINIRECEIVER 3.0 1L M
10992563		1	MINIRECEIVER 3.0 2R M
10992564		1	MINIRECEIVER 3.0 2L M
10992565		1	MINIRECEIVER 3.0 3R M
10992566		1	MINIRECEIVER 3.0 3L M
10992567		1	MINIRECEIVER 3.0 4R M
10992568		1	MINIRECEIVER 3.0 4L M
10992569		1	MINIRECEIVER 3.0 OR P
10992570		1	MINIRECEIVER 3.0 OL P
10992571		1	MINIRECEIVER 3.0 IR P
10992572		1	MINIRECEIVER 3.0 1L P
10992573		1	MINIRECEIVER 3.0 2R P
10992574		1	MINIRECEIVER 3.0 2L P
10992575		1	MINIRECEIVER 3.0 3R P
10992576		1	MINIRECEIVER 3.0 3L P
10992577	1	MINIRECEIVER 3.0 4R P	
10992578	1	MINIRECEIVER 3.0 4L P	
Connexx	10991609	1	SET THINTUBE 3.0 S0
	10991610	1	SET THINTUBE 3.0 S1
	10991611	1	SET THINTUBE 3.0 S2
	10991612	1	SET THINTUBE 3.0 S3
	10991613	1	SET THINTUBE 3.0 S4
	10992492	1	SET THINTUBE 3.0 SO P
	10992493	1	SET THINTUBE 3.0 S1 P
	10992494	1	SET THINTUBE 3.0 S2 P
	10992495	1	SET THINTUBE 3.0 S3 P
	10992496	1	SET THINTUBE 3.0 S4 P
Connexx	10991403	1	MEASURING GAUGE 3.0
	10993649	1	WAXGUARD 3.0 NANOCARE CXX
	10999334	1	WAXGUARD 3.0 CERUSTOP XL CXX WHT2 ²
	10984033	1	TOOL HANDLING 3.0
	10967340	1	TOOL REMOVAL 3.0
	10993677	10	PACK CONCHA LOCK 3.0
10993607	1	WAXGUARD 3.0 NANOCARE SIGNIA	

²For miniReceiver 3.0 HP